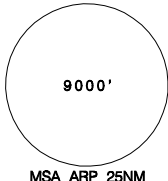


**臺灣桃園國際機場**  
TAIPEI/TAIWAN TAOYUAN INTL AD

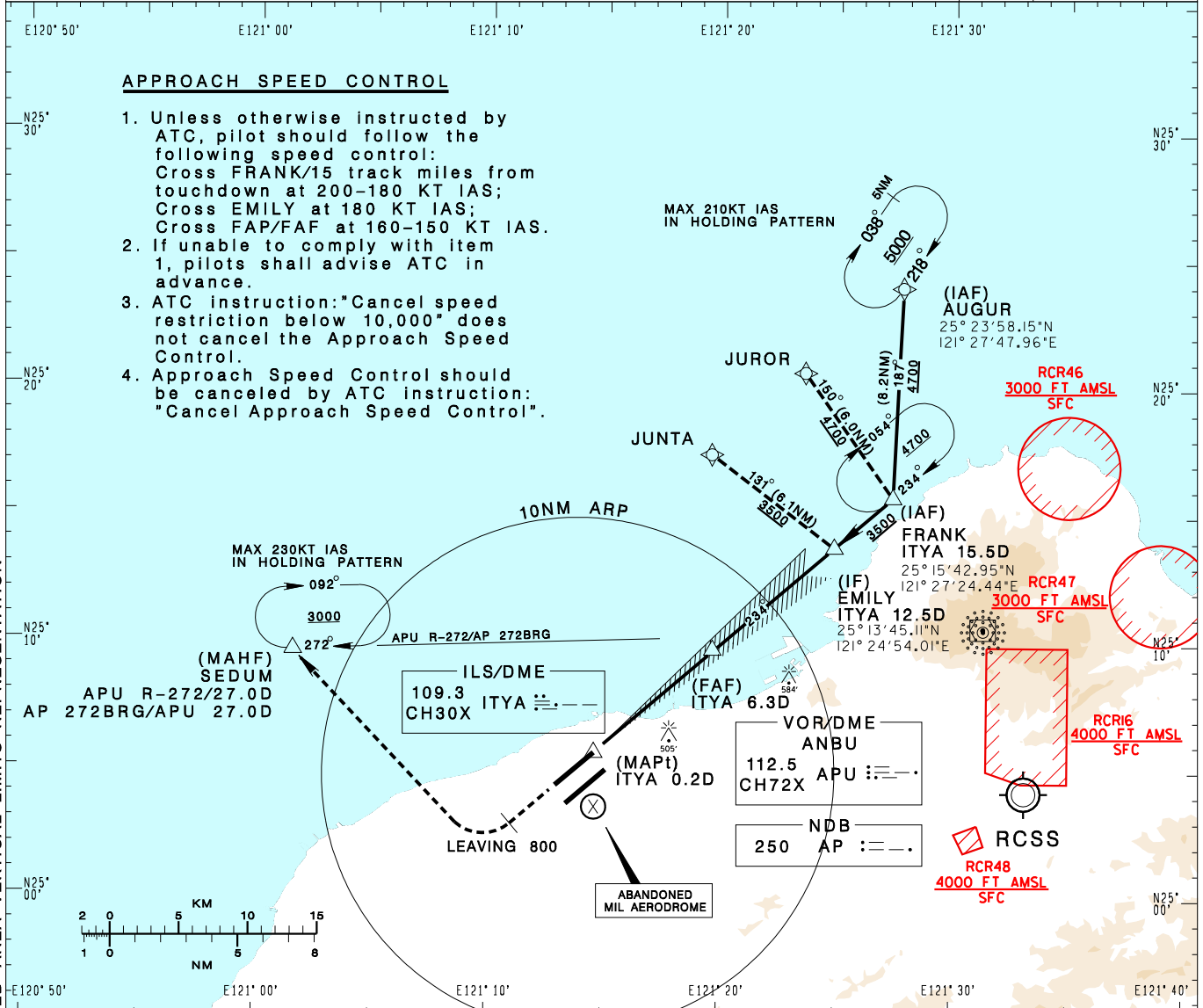
RCTP  
LOC RWY23R

TAIPEI APP 125.1 128.5 125.6	TAIPEI TWR 118.7 129.3	ATIS 127.6	VAR 5° W 	
Apt Elev: 108' Rwy23R THR Elev: 63'		Trans Level: FL130		Trans Alt: 11,000'
BEARINGS ARE MAGNETIC; DISTANCES ARE NAUTICAL MILES; ELEVATIONS, HEIGHTS IN FEET				

**APPROACH SPEED CONTROL**

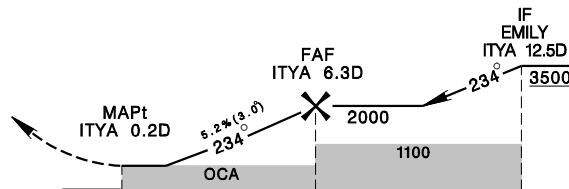
- Unless otherwise instructed by ATC, pilot should follow the following speed control:  
Cross FRANK/15 track miles from touchdown at 200-180 KT IAS;  
Cross EMILY at 180 KT IAS;  
Cross FAP/FAF at 160-150 KT IAS.
- If unable to comply with item 1, pilots shall advise ATC in advance.
- ATC instruction: "Cancel speed restriction below 10,000" does not cancel the Approach Speed Control.
- Approach Speed Control should be canceled by ATC instruction: "Cancel Approach Speed Control".

CHANGES: NEW PAGE NUMBER, UPDATE RESTRICTED AREA VERTICAL LIMITS REPRESENTATION



DIST to ITYA	2DME	3DME	4DME	5DME	6DME
ADVISORY ALT	700	1020	1340	1660	1970

**MISSED APCH:**  
CLIMB ON HDG 234 UNTIL LEAVING 800, THEN TURN RIGHT DIRECT TO SEDUM, MAINTAIN 3000 AND HOLD.  
\*NO TURN PRIOR TO MAPt.



NM FROM ITYA 5 0 5 10 15

**MINIMA (OCA IN FT, VIS IN M, OCH IN FT)**

CATEGORY	A	B	C	D
STRAIGHT IN	610/1200 RVR1200 547	610/1600 547	610/1800 547	610/1800 547
STRAIGHT IN (ALS OUT)	610/1600 547	610/1600 547	610/2500 547	610/2500 547
CIRCLING	880/1900 772	930/2800 822	1030/4400 922	1030/4800 922

**NOTE**  
1. CIRCLING NOT AUTHORIZED SOUTHEAST OF RWY 05R/23L.  
2. ATS SURVEILLANCE REQUIRED FOR AUGUR TO FRANK AND MISSED APCH SEGMENTS.  
\*DME REQUIRED.